

2019 - CHILLY GONZALES' SOLO PIANO III - RIDER

PLEASE CONFIRM line-up with tour manager as the list of accompanying musicians is subject to change.

Update: 10th July 2019

I. HOSPITALITY RIDER

CONTACTS

- **TOUR MANAGER** : Fabienne Bertheau fabiennebertheau@gmail.com +33 6 70 16 10 55
- **F.O.H-SOUND ENGINEER**: Ekki Von Nordenskjold ekki@audioguard.de +491718013841
OR Ingo Schmidt big-mama-prod@web.de +49(0)1732341602
(We will advise which of our 2 FOHs will be there)
- **Pre-Production**: Victor Sonier victor@chillygonzales.com +33 6 62 24 34 51
- **Merchandising- Prod Assistant** julien@chillygonzales.com +33 6 25 46 06 85

LINE-UP

- Chilly Gonzales – Piano – Voice
- Stella Le Page - Cello – Voice – Melodica
- Joe Flory – Drums – Flugelhorn – Voice

TOURING PARTY = 6

Chilly Gonzales - Stella Le Page - Joe Flory - FOH - Fabienne Bertheau - Julien Laurian

BACKSTAGE REQUIREMENTS - PLEASE PROVIDE THIS ENTIRE LIST:

- 3 dressing rooms + 1 Production Office with WIFI – ALL must have a door that locks
- 10 medium towels
- Soap + sink
- Hair Dryer
- 2 Hot water kettles FULL on arrival (1 in Chilly Gonzales' dressing room, 1 in Green Room)
- Steamer (**NOT** IRON)
- Stand-alone Heater in Chilly Gonzales dressing room

CATERING

- **PLEASE BUY LOCAL + AVOID PLASTIC PACKAGING.**
PLEASE DO NOT FURNISH US WITH PLASTIC FORKS / SPOONS / KNIVES / PLATES / CUPS. IF YOU REALLY CAN'T FURNISH US WITH NON-REUSABLE EATING WARE, USE PAPER AND BAMBOO. CHILLY GONZALES IS COMMITTED TO GREENING OUR TOUR – WE EXPECT OUR LOCAL PARTNERS TO USE BEST EFFORTS TO DO THE SAME.
- **ALL TIMES - We will do our own sandwiches**
- **VERY IMPORTANT: 1 PANINI GRILL (not a toaster!)**
- Tomatoes - Salad
- Cheese: Cheddar – Gouda . . . NO PLASTIC PACKAGING
- Smoked organic salmon (NO MEAT / NO PLASTIC PACKAGING)
- Avocado X 5
- Bread
- Olive Oil & Butter
- Fruits
- Assorted Lindt® Dark Chocolate
- **Honey**
- Juices: Peach nectar (Granini® or Pago®)
- TEA (no Lipton), Chai Tea, Chamomile, Sage tea
- **40 local beers + 3 bottles of white wine without sulfites + 3 bottles of red wine without sulfites**

re

2019 - CHILLY GONZALES' SOLO PIANO III - RIDER

- **DO NOT FURNISH ANY SMALL PLASTIC BOTTLES.**
WE TRAVEL WITH WATER GOURDES FOR STAGE AND FOR OUR OWN DAY TO DAY USE. PLEASE FURNISH US WITH 2 x 10 LITER WATER TANKARD



+ A Hot Meal must be provided before the show for the entire crew (minimum of 6 hot meals) Or cash buy-out of equivalent of 30 euros per person.

II. ACCOMODATION - HOTEL ROOMS = 6

Where included in deal OR reserved by promoter – minimum 4*

- Chilly Gonzales: Suite with king size bed
- Fabienne Bertheau: Room with twin beds
- Stella Le Page: Room with double bed
- Joe Flory: Room with double bed
- FOH (Ekki Von Nordenskjold or Ingo Schmidt): room with double bed
- Julien Laurian: Room with twin beds

VERY IMPORTANT:

- Check in for Chilly Gonzales must be done by proxy - Fabienne Bertheau Tour Manager has all authority and any required documents needed to check him and is to be given his room key.
- Hotel MUST be at walking distance from the venue.
- Hotel MUST BE QUIET, and rooms must be well isolated. Rooms must be away from elevators, main streets and ice machines.
- Room for Chilly Gonzales Must have **WINDOWS that OPEN** + BATHTUB, facing a quiet street.
- Free wifi
- Hotel must have a Swimming Pool. If this is not possible within walking distance to the venue, please furnish the following information to Tour Manager on arrival: address and telephone number of closest gym swimming pool, its operating hours + day guest pass policies and prices.

2019 - CHILLY GONZALES' SOLO PIANO III - RIDER

III. MARKETING - PRESS

All material can be found here: <http://www.chillygonzales.com/solopiano-press/>

PHOTOGRAPHY POLICY

- MAX. of 2 Photographers, pre-approved by Tour Manager + MAX of 2/3 songs – NO FLASH
TM will determine photographer placement in the room and will advise what 2/3 songs they may shoot.
- NO FILMING or PHOTOS during Sound-check / Rehearsal
- Permission to shoot Chilly Gonzales is given in exchange for the right to non-exclusively use the photos taken on all Chilly Gonzales social networks. Appropriate credit will be given to the photographer on such networks.
- Photographers must therefore give their email to Tour Manager at the shows and transfer a copy of all shots taken to tour manager's hard drive after

PROMO REQUEST

For any promo request please contact F Fabienne Bertheau fabiennebertheau@gmail.com +33 6 70 16 10 55 in advance with the following details:

COUNTRY:

NAME of MEDIA:

TYPE of MEDIA:

CIRCULATION Or AUDIENCE RATING:

TYPE of INTV: PHONER, SKYPE, IN PERSON, E-MAIL ITW, etc

LENGTH:

JOURNO NAME & CONTACT:

DEADLINE/SPECIFIC TIMINGS:

DATE OF BROADCASTING/PUBLICATION/ INTERNET LINK:

2019 - CHILLY GONZALES' SOLO PIANO III - RIDER

IV. BACKLINE LIST

Under no circumstances will the backline be shared with any other acts.

Please Provide:

- PIANO BECHSTEIN D 282 GRAND. This is a condition precedent to the validity of the contract. Chilly Gonzales is a Bechstein artist so in the event you are not able to do provide this piano, you must notify us immediately.
- Piano MUST be well TUNED once directly before sound-check and directly before show. Chilly Gonzales' preference is that the Piano be tuned at 442Hz, but if the Piano is usually tuned at another frequency then it is best to keep tune it to its usual frequency - in other words, if it's typically tuned at A440, then please tune it to that.
- 1 Piano bench
- If there is an ORGAN in the venue, please get in touch with TM before the show, Chilly Gonzales will play one song on it during the last Encore.

We Bring:

- Melodica
- Metronome

Stella Lepage

She Brings her own Cello, **please provide:**

- 1 piano Bench – **not a chair**

Joe Flory

please Provide: ROCK DRUM KIT (Gretsch®, Broadcaster® or *PRE-APPROVED* similar)

with following elements:

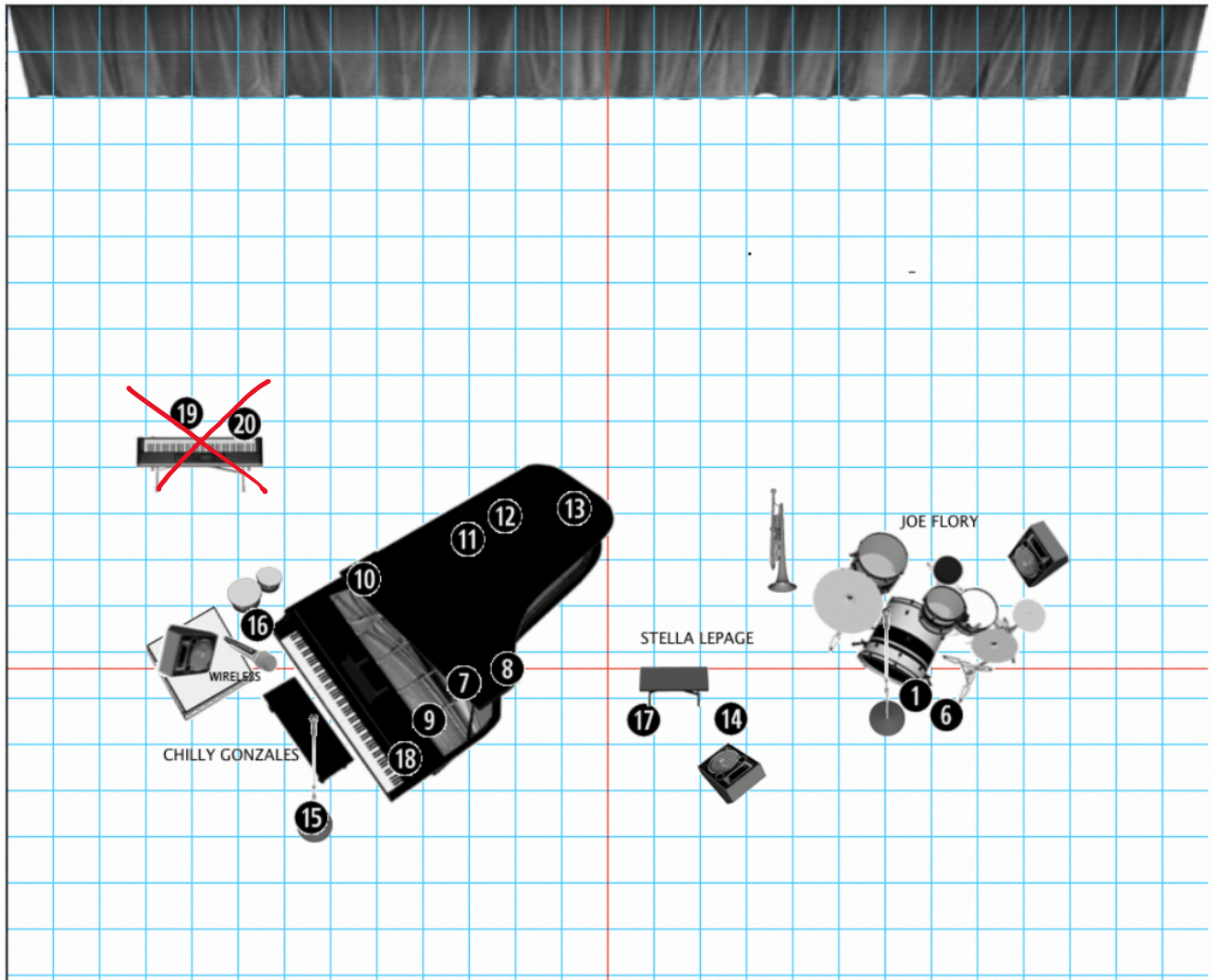
- Carpet for Drumkit
- 18-inch bass drum (outwards-facing bass drum skin must have PORT HOLE in it for mic to go in)
- 12-inch rack tom
- 14-inch floor tom
- Snare
- All with coated drum skins (not clear)
- Aildjan crash
- Thin ride
- High hats (preferred model Constantinople thin)
- Kick pedal
- Drum key
- All hardware
- 1 stool
- 1 tambourin
- 1 wood block
- Flugelhorn Yamaha YFH-8310Z® or STOM VI® or Yamaha Flügelhorn YFL635T® - Joe Flory will bring his own mouth piece.

Fabienne Bertheau

Please Provide: additional wireless INTERCOM for at least 3 people, including 2 people of the Chilly Gonzales Team, so that they can communicate between them and with the venue's technicians.

2019 - CHILLY GONZALES' SOLO PIANO III - RIDER

V. STAGE PLOT



- Stage must be cleared of instruments, lights and sound equipment not relating to CHILLY GONZALES' SOLO PIANO III or belonging to any other Band or Artist.
- Back Line MUST BE ON STAGE before arrival of Artists at the venue and POSITIONED as shown on stage plot.
- Height Riser Chilly Gonzales's Monitor = 15 cm - covered in black curtain cloth
- Drum kit: marks on the drum kit's carpet must be done after position is approval by Tour Manager during sound check.

VI. INPUT LIST

Version 25 oct 2018

Inputs for Chilly Gonzales & Stella Lepage & Joe Flory

AUDIO 
GUARD
YOUR PERSONAL
Ekki von Nordenskjöld
Lindach 12
85658 Eggenstein
Tel: 08093 / 9396
Mob: 0171 / 801 3841
ekki@audioguard.de

CH	Instrument	Mic	
1	Kick	Shure SM 91	
2	SN	Shure SM 57 Beta	
3	Tom	Shure Beta 98	
4	Floor Tom	Shure Beta 98	
5	OH L	Neumann KM 184	
6	OH R	Neumann KM 184	
7	Piano L	AKG 414	
8	Piano R	AKG 414	
9	Piano solo hi	Schoeps/ DPA 4099	Piano Magnet
10	Piano solo low	Schoeps/ DPA 4099	Piano Magnet
11	Piano Pickup low	we provide	
12	Piano Pickup mid	we provide	
13	Piano Pickup hi	we provide	
14	Cello	DPA 4099	Cello mount
15	C. Gonzales Vox	Shure wireless	KSM9
16	C. Gonzales Spare	Shure wireless	KSM9
17	Stella Clip	Shure wireless	Clip Mic (e.g. DPA 4060)
18	Metronom	DPA 4099	Piano Magnet
19	Keys L	DI / Stereo DI	Please provide Monitor
20	Keys R	DI	for Casio Keyboard
21	Spitt von CH14 Cello		
	Monitor 1 for Chilly Gonzales		
	Monitor 2 for Stella		
	Monitor 3 for Joe		

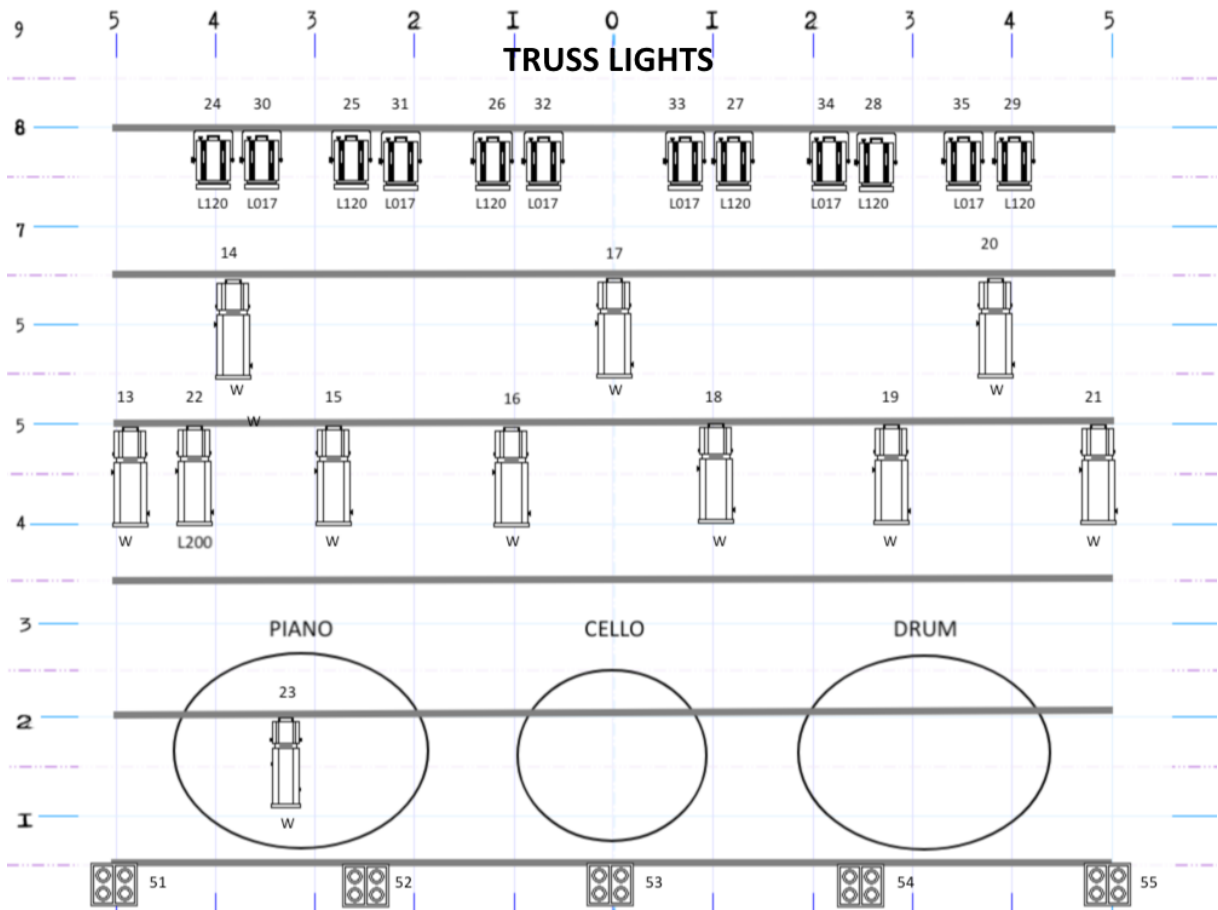
+ please provide XLR cables, helping us, to make audio recording with our Zoom H5 at the FOH position

2019 - CHILLY GONZALES' SOLO PIANO III - RIDER

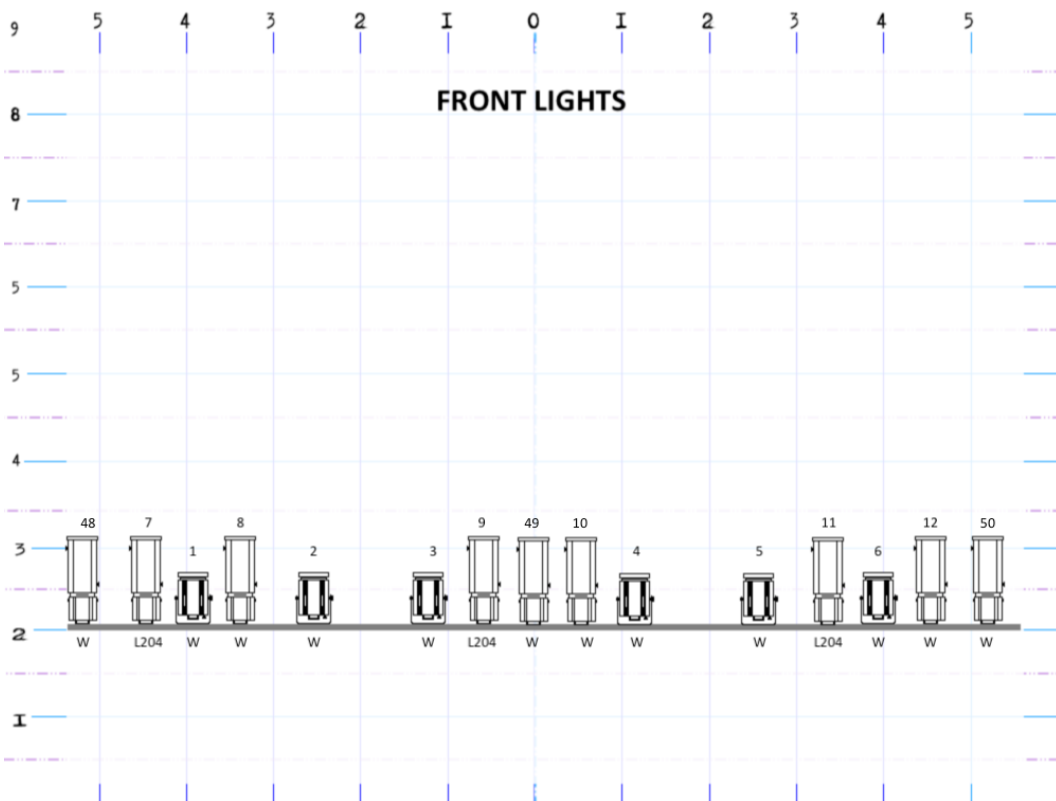
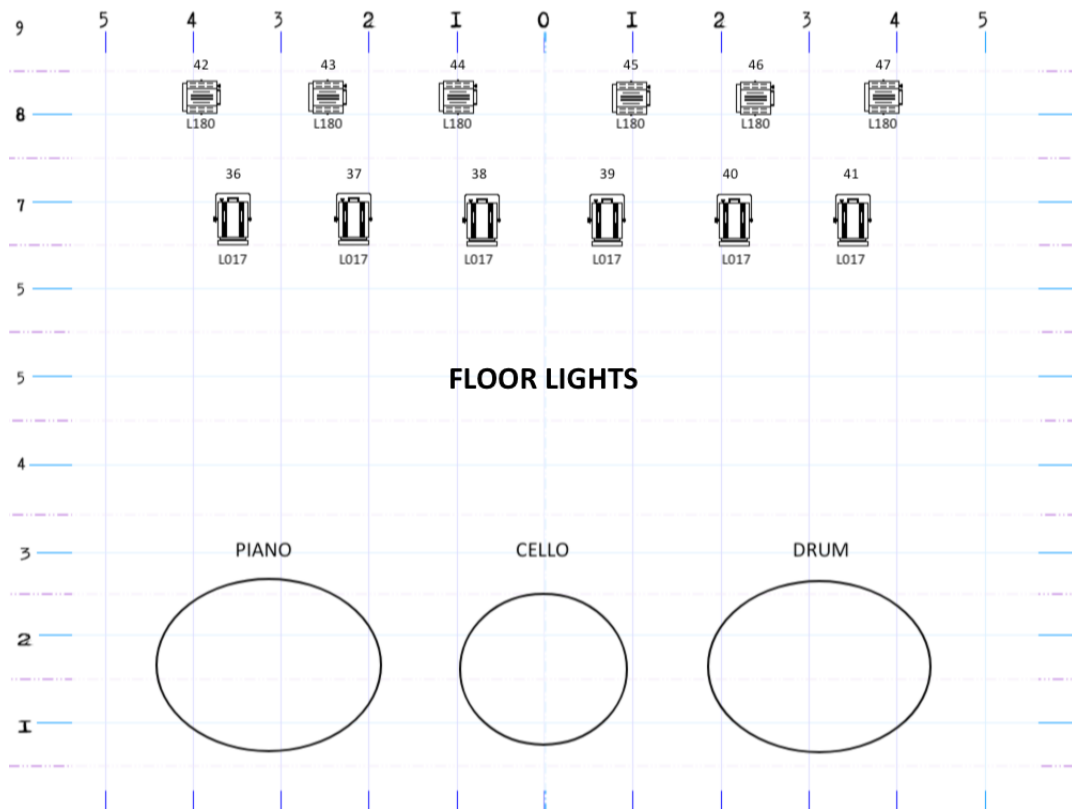
VII. LIGHTS

- **Minimum of 2 lighting engineers / technicians who are familiar with the room and the Lighting system.**
- **In Advance, get in touch with Tour Manager: Fabienne Bertheau fabiennebertheau@gmail.com +33670161055**
- TM will send the set list with light instructions few days before the show and will stand by lighting engineers / technicians before and during soundcheck to explain and rehearse cues. TM will stand by lighting engineers throughout the show or will communicate with them using a wireless Intercom from the backstage. **Lighting engineers must provide all reasonable efforts to follow TM's instructions at all times.**
- No colors other than white or amber. Except one song with blue lights. No pink, no green. No smoke, no fog.

Please find below our ideal lighting list. If venue is equipped with a different configuration, please communicate it to Tour Manager for approval and validation.



2019 - CHILLY GONZALES' SOLO PIANO III - RIDER



2019 - CHILLY GONZALES' SOLO PIANO III - RIDER

Channel #	Projector type	Color	Focus
1.	PC 2 kW	N.C.	General Front Light
2.	PC 2 kW	N.C.	General Front Light
3.	PC 2 kW	N.C.	General Front Light
4.	PC 2 kW	N.C.	General Front Light
5.	PC 2 kW	N.C.	General Front Light
6.	PC 2 kW	N.C.	General Front Light
7.	Profile 2 kW	L204	Piano Front Light
8.	Profile 2 kW	N.C.	Piano Front Light
9.	Profile 2 kW	L204	Cello Front Light
10.	Profile 2 kW	N.C.	Cello Front Light
11.	Profile 2 kW	L204	Drum Front light
12.	Profile 2 kW	N.C.	Drum Front light
13.	Profile 2 kW	N.C.	Piano Back Light
14.	Profile 2 kW	N.C.	Piano Back Light
15.	Profile 2 kW	N.C.	Piano Back Light
16.	Profile 2 kW	N.C.	Cello Back Light
17.	Profile 2 kW	N.C.	Cello Back Light
18.	Profile 2 kW	N.C.	Cello Back Light
19.	Profile 2 kW	N.C.	Drum Back Light
20.	Profile 2 kW	N.C.	Drum Back Light
21.	Profile 2 kW	N.C.	Drum Back Light
22.	Profile 2 kW	L200	Piano Back Light
23.	Profile 2 kW	N.C.	Droplight ONLY on the piano keys (Shapers)
24.	PC 2 kW	L120	General Backlight
25.	PC 2 kW	L120	General Backlight
26.	PC 2 kW	L120	General Backlight
27.	PC 2 kW	L120	General Backlight
28.	PC 2 kW	L120	General Backlight
29.	PC 2 kW	L120	General Backlight
30.	PC 2 kW	L017	General Backlight
31.	PC 2 kW	L017	General Backlight
32.	PC 2 kW	L017	General Backlight
33.	PC 2 kW	L017	General Backlight
34.	PC 2 kW	L017	General Backlight
35.	PC 2 kW	L017	General Backlight
36.	PC 2 kW	L017	General Backlight
37.	PC 2 kW	L017	General Backlight
38.	PC 2 kW	L017	General Backlight
39.	PC 2 kW	L017	General Backlight
40.	PC 2 kW	L017	General Backlight
41.	PC 2 kW	L017	General Backlight
42.	Striplight	L180	Backdrop
43.	Striplight	L180	Backdrop
44.	Striplight	L180	Backdrop
45.	Striplight	L180	Backdrop
46.	Striplight	L180	Backdrop
47.	Striplight	L180	Backdrop
48.	Profile 2 kW	N.C.	Front Light – Stage Left
49.	Profile 2 kW	N.C.	Front Light – Stage Center
50.	Profile 2 kW	N.C.	Front light – Stage Right
51-55	Blinder	N.C.	Audience Light

re

2019 - CHILLY GONZALES' SOLO PIANO III - RIDER

VIII. TECHNICAL INSTRUCTIONS

Please send all VENUE TECH SPECS - SOUND and LIGHTS – at least 4 weeks before the show to Tour Manager

- Performance Length: 105 minutes (including 1 or 2 Encore – NO INTERMISSION)
- The show is best suited for a seated venue. This is a condition precedent to the validity of the contract.
Should the venue not be seated, we need to be informed immediately.
- Free stage area of 10 x 6 meters, stable and cleaned. Black back drop and black alleys.
- BEFORE our arrival the Stage and the complete sound and lighting system must be connected and tested and ready to play error-free.

SOUND

In Advance, get in touch with our FOH: Ekki Von Nordenskjold ekki@audioguard.de +491718013841
(OR Ingo Schmidt big-mama-prod@web.de +49(0)1732341602 - we will advise which of our 2 FOHs will be there)

P.A.

The amplification of this show is about KEEPING THE NATURAL SOUND of the piano and cello.
The instruments' sound must be AUGMENTED but NOT CHANGED.

Please furnish:

A great sounding contemporary PA, preferably Line Array, adapted to the locations:
90dB sound pressure at the front court with high directivity and uniform sound distribution throughout the whole audience area. (L-Acoustic, d & b, Nexo, JBL, EAW, Meyer).

In any case, nearfills required. in conventional PA from 15m depth hall.

Delays: Should galleries or balconies be opened, they must be amplified separately. Delays, nearfills, subs must be directly controlled separately from the FOH.

All sound system must be checked and ready before our technicians' arrival.

F.O.H.

Digital panel: (Yamaha CL5, Soundcraft Vi6)

The desk space must be at ground level and located centrally in the rear third of the audience area (not under a balcony or in a corner, in no event in a separate control room).

This is a condition precedent to the validity of the contract.

Should this not be the case, we need to be informed immediately.

Please provide a minijack cable at FOH to playback music for system tuning.

MICROPHONES *see input list*

MONITORS *see input list*

Please furnish a separate panel for mixing the monitors with an experienced monitor engineer to operate.

This is a condition precedent to the validity of the contract.

Should this not be the case, we need to be informed immediately.

3 Monitor Wedges: e.g. 12 " / 1" (L-Acoustic 12XT, d & b M6 / MAX12, Nexo PS10, Meyer UM-1, JBL, K & F)